

Urgent Care Services

If you need care fast but aren't sick enough to go to an emergency room, drop by our Smiley Urgent Care Center. No appointments are necessary and it is open:

Monday – Friday: 9 a.m. – 7 p.m.

Saturday and Sunday: 8 a.m. – 5 p.m.



Affordable Care

We accept most private insurance plans, as well as Medicaid and Medicare. We also provide services at reduced cost to those without health insurance who qualify. Contact your local community health center for more information.



Our Services

Our doctors and nurse practitioners treat colds, allergies and broken bones. We also provide dental and eye care, as well as diagnose and treat major diseases.

We'll treat your health care needs, including:

- Allergies
- Annual checkups
- Asthma
- Cancer
- Children's health
- Cholesterol testing
- Cold and flu care
- Dental care
- Diabetes
- Eye exams
- Flu shots
- Heart care
- High blood pressure
- Lab tests
- Mental health counseling
- Nutrition education
- Pregnancy
- Prescriptions
- Sexually transmitted diseases (STDs)
- Skin conditions
- Smoking cessation
- Sports and school physicals
- Vaccinations
- Women's health
- X-rays

All of our services are confidential and protect patient privacy.



Funding for this brochure was supported by
Episcopal-Presbyterian Charitable Health & Medical Trust



QUALITY
AFFORDABLE
HEALTH CARE
IN THE HEART OF
YOUR COMMUNITY



www.stlouisIHN.org





Welcome to the St. Louis Integrated Health Network

Our community health centers provide a warm, welcoming environment for your health care. You can see a doctor right in the heart of your community.



Our Locations

BETTY JEAN KERR PEOPLE'S HEALTH CENTERS

- A** Central Health Center
5701 Delmar Boulevard
St. Louis, MO 63112 **314.367.7848**
- B** North Health Center
11642 West Florissant Avenue
Florissant, MO 63033 **314.838.8220**
- C** West Health Center
7200 Manchester Road
Maplewood, MO 63143 **314.781.9162**

CRIDER HEALTH CENTER

- D** Crider Health Center
1032 Crosswinds Court
Wentzville, MO 63385 **636.332.6000**

FAMILY CARE HEALTH CENTERS

- E** Carondelet
401 Holly Hills Avenue
St. Louis, MO 63111 **314.353.5190**
- F** Forest Park Southeast
4352 Manchester Avenue
St. Louis, MO 63110 **314.531.5444**

GRACE HILL NEIGHBORHOOD HEALTH CENTERS

- G** Murphy-O'Fallon Health Center
1717 Biddle Street
St. Louis, MO 63106 **314.814.8700**
- H** St. Patrick Center
800 North Tucker Boulevard
St. Louis, MO 63101 **314.814.8700**
- I** Soulard-Benton Health Center
2220 Lemp Avenue
St. Louis, MO 63104 **314.814.8700**
- J** South Health Center
3930 South Broadway
St. Louis, MO 63118 **314.814.8700**
- K** Water Tower Health Center
4414 North Florissant Avenue
St. Louis MO 63107 **314.814.8700**

MYRTLE HILLIARD DAVIS COMPREHENSIVE HEALTH CENTERS

- L** Comprehensive Health Center
5471 Dr. Martin Luther King Drive
St. Louis, MO 63112 **314.367.5820**
- M** Florence Hill Health Center
5541 Riverview Boulevard
St. Louis, MO 63120 **314.389.4566**
- N** Homer G. Phillips Health Center
2425 North Whittier Street
St. Louis, MO 63113 **314.371.3100**

SAINT LOUIS COUNTY DEPARTMENT OF HEALTH

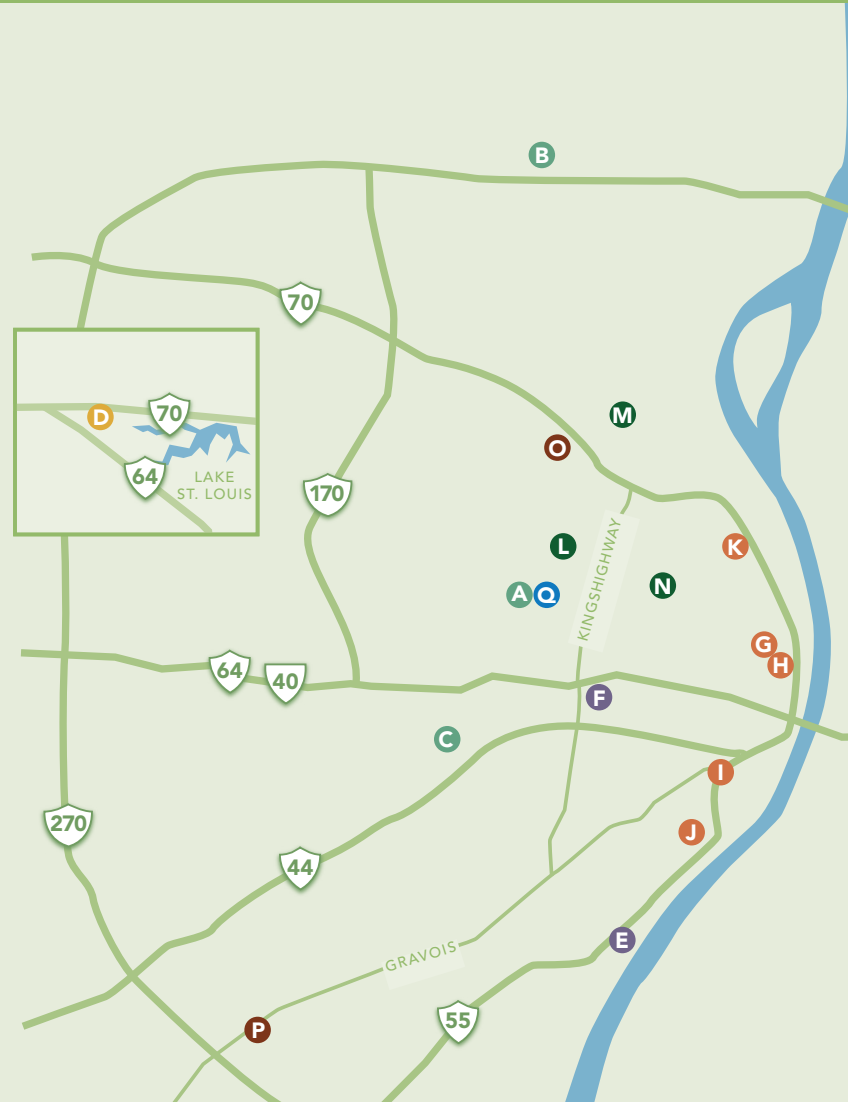
- O** North Central Community Health Center
4000 Jennings Station Road
Pine Lawn, MO 63121 **314.679.7800**
- P** South County Health Center
4580 South Lindbergh Boulevard
Sunset Hills, MO 63127 **314.615.0400**

SPECIALTY SERVICES

- Q** St. Louis ConnectCare Smiley Urgent Care Center
5535 Delmar Boulevard
St. Louis, MO 63112 **314.879.6300**
(No appointment necessary)

URGENT CARE SERVICES

- Q** St. Louis ConnectCare Specialty Services
5535 Delmar Boulevard
St. Louis, MO 63112
(Contact your doctor for a referral)



For more information, please call your center or visit www.stlouisIHN.org.